

CONTENTS

Our company	3
Machines and molds	4
Technology and innovation	6
Combitop castellated floor board	8
Solotop castellated floor board	10
Solotop 5 cm	12
Combitop 5 cm	13

Why choose HIRSCH modular boards



We are Europe's leading manufacturer and OEM supplier for all kinds of castellated board technology.



Our 25 years of experience in modular board production have given us unrivaled expertise.

As a strategic partner, we provide tailored solutions to support our customers.



Our Europe-wide production and logistics network gives our customers a considerable advantage when it comes to opening up their markets and serving them on a daily basis.



Our top priority is to provide consistently high-quality products at competitive prices.



As a supplier we offer outstanding support, which is reflected in our very high customer satisfaction.

Over 50 years' experience and innovation

The HIRSCH Servo Group has been producing molding tools and machines for manufacturing molded EPS parts since 1972. The company's experience in product design and manufacturing technology, plus its expertise in a wide range of material properties, have made HIRSCH one of the world's leading machine and mold engineering specialists in the EPS industry.

Our biggest strength lies in providing innovative solutions that meet all our customers' requirements.

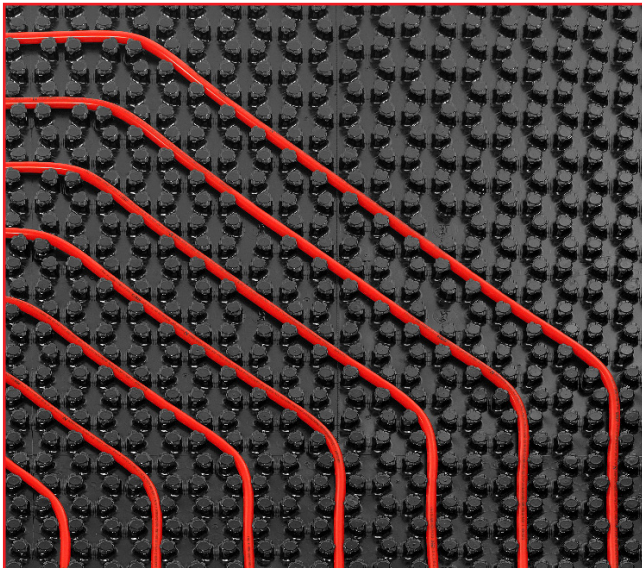


MACHINES AND MOLDS



Innovative, tried-and-trusted manufacturing solutions

In addition to established HIRSCH technologies such as the Combitop deep-drawing process or the Kaschee process, HIRSCH offers a range of innovative manufacturing technologies with advantages including lower floor installation height, precise pipe routing, reduced screed requirements, quick one-person assembly and better adjustability.



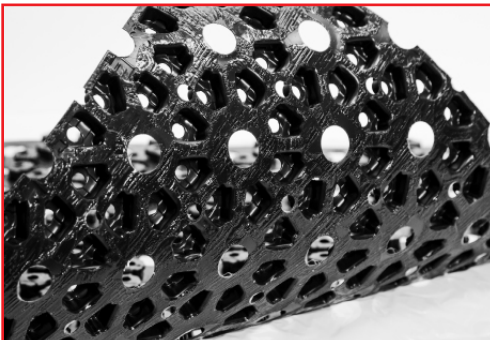
TECHNOLOGY AND INNOVATION



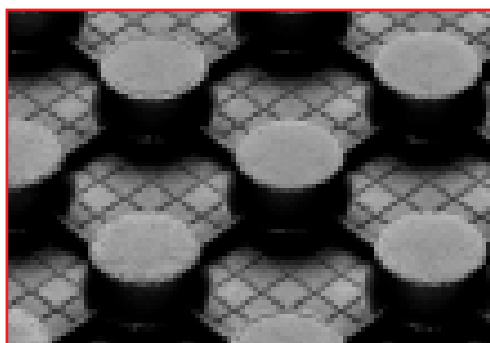
Full-surface, foil-laminated dry construction board for improved heating with the advantage of quick installation.



Castellated board featuring rigid polystyrene foam (EPS) with added graphite for improved thermal conductivity at low installation heights.



Self-adhesive thin film element with perforated castellated surface, specifically designed for extensions and renovations.



Castellated board, manufactured using the skin-molding process, to create a moisture barrier and provide thermal insulation.

COMBITOP



Laying grid:
5 cm

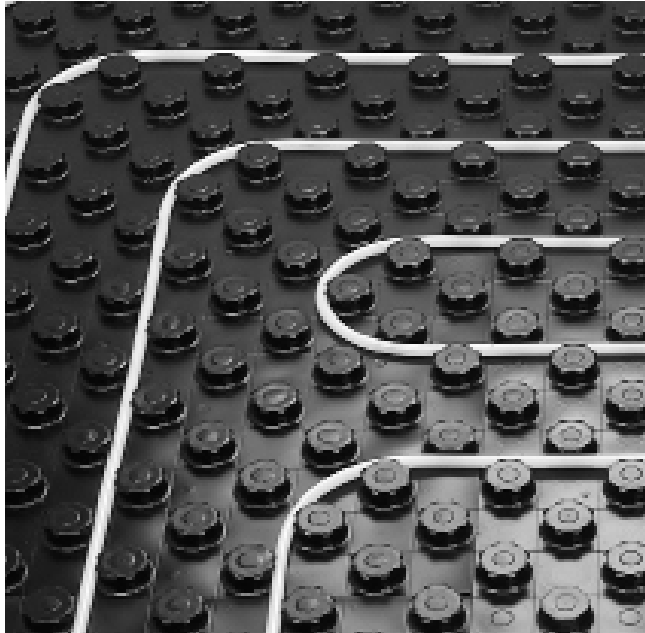
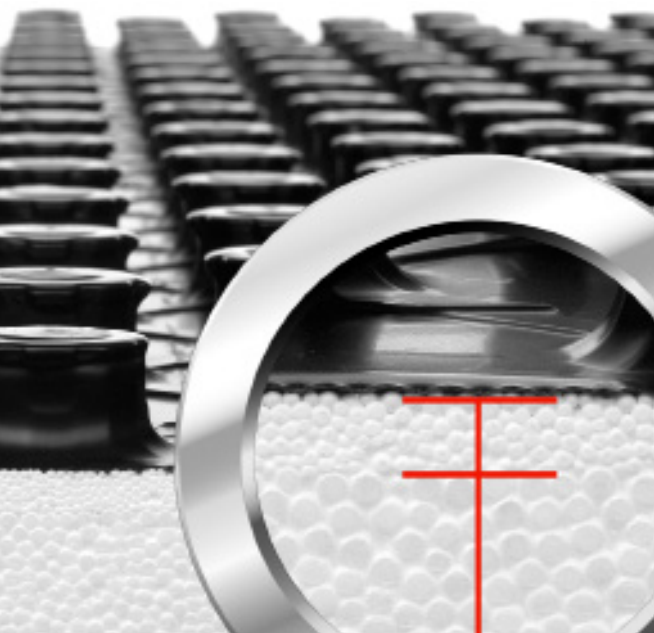
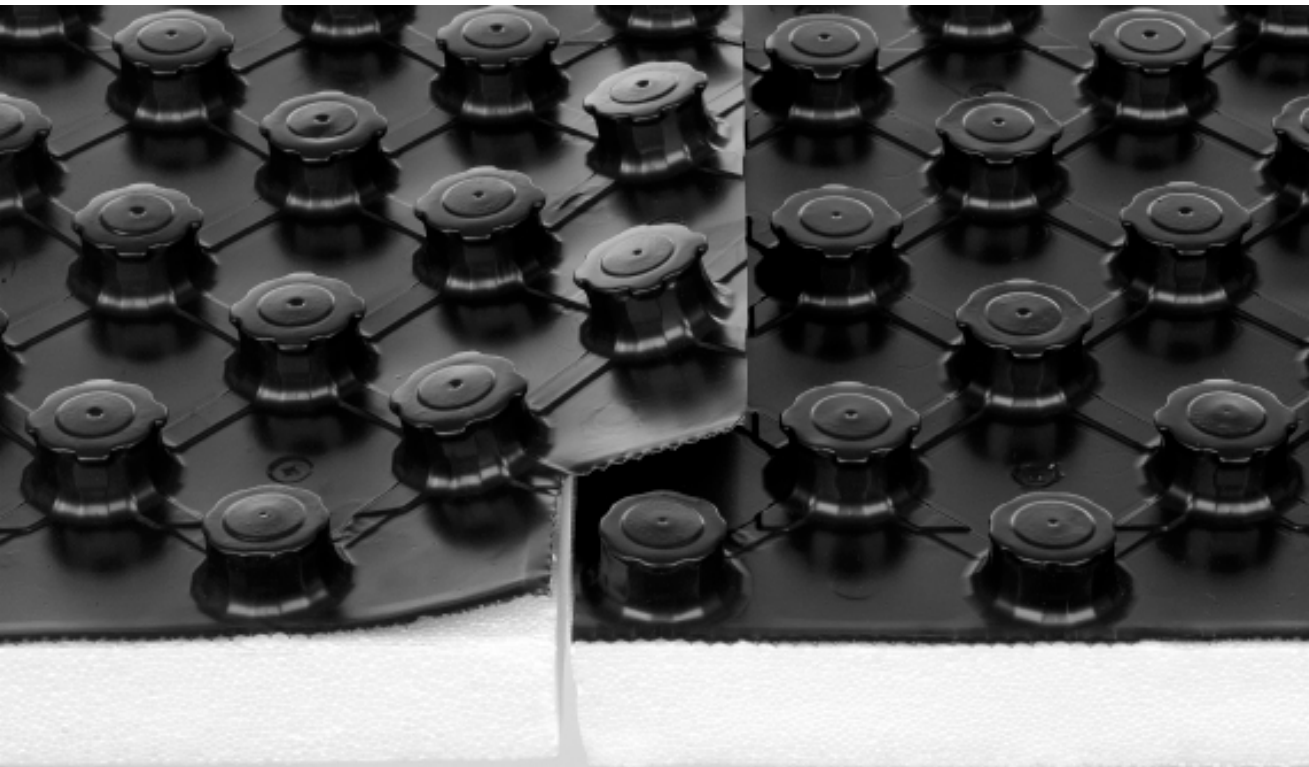


Combitop castellated floor board

Ideal for floors with heat and impact sound insulation

- Made using a deep-drawing process
- Waste-free laying thanks to the "nub on nub" principle
- The secure, tight fit of the castellated floor boards makes them suitable for liquid screed
- Double density guarantees optimum impact resistance and ideal noise and sound insulation
- The nub shape ensures the heating pipes are held securely in place
- A special nub structure allows various pipe dimensions (14 to 17 mm)
- Quick one-person assembly

COMBITOP



SOLOTOP



Laying grid:
5 cm

Solotop castellated floor board

Ideal for low installation heights, e.g. when renovating older buildings

- Waste-free laying thanks to the “nub on nub” principle
- The secure, tight fit of the castellated floor boards makes them suitable for liquid screed
- Laying on heat and impact sound insulation
- Quick one-person assembly



SOLOTOP

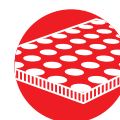


Solotop



Properties	Value
Nub shape	Round, 5 cm
Board size (length x width)	1,450 x 850 mm
Effective board size (L x W)	1,400 x 800 mm
Effective board area	1.12 m ²
Laying grid (pipe spacing)	50 mm
Overall nub height	20 mm
Pipe diameter	14 - 17 mm
Polystyrene film thickness	1 mm (1,000 μ)
Weight per board	approx. 1,280 g
Standard film color	black
Max. load	5 kPa (500 kg/m ²)
Quantity per palette	130 boards = 145.6 m ²
Quantity per box	12 boards = 13.44 m ²

Combitop



Properties	Combitop ND 11	Combitop 30-2
Board dimensions (length x width)	1,450 x 850 mm	1,450 x 850 mm
Effective board size	1,400 x 800 mm	1,400 x 800 mm
Effective board area	1.12 m ²	1.12 m ²
Laying grid (pipe spacing)	50 mm	50 mm
Nominal insulation thickness dL	11 mm	30 – 2 mm
Total thickness with pipe holder	31 mm	51 mm
Pipe diameter	14 – 17 mm	14 – 17 mm
Compressive stress at 10% compression	150 kPa	–
Type of application per DIN 4108-10	DEO	DESsg
Designation per EN 13163	EPS 150	PST-TK 5000
Fire behaviour per EN 13501-1	E	E
Impact sound improvement	–	28 dB
Stiffness group per EN 13163	–	SD 20
Thermal conductivity (nominal value)	0.035 W/(mK)	0.040 W/(mK)
Thermal resistance	0.30 m ² K/W	0.75 m ² K/W
Heat distortion temperature	80° C	80° C
Max. load	45 kPa (4,500 kg/m ²)	5 kPa (500 kg/m ²)
Flexural strength	≥ 250 kPa	≥ 100 kPa
Standard film color	black	black
Quantity per box	13 boards = 14.56 m ²	6 boards = 6.72 m ²
Box size (L x W x H)	1,510 x 280 x 860 mm	1,510 x 265 x 860 mm

5-37

HIRSCH Porozell Sp.zo.o.
ul.Kiełczowska 54
51-317 Wrocław
T +48 71 784 79 50

office.polen@hirsch-gruppe.com
www.hirsch-porzell.pl

 /hirschporozellpolska

 /company/hirschporozellpoland

 /HIRSCH Servo Group